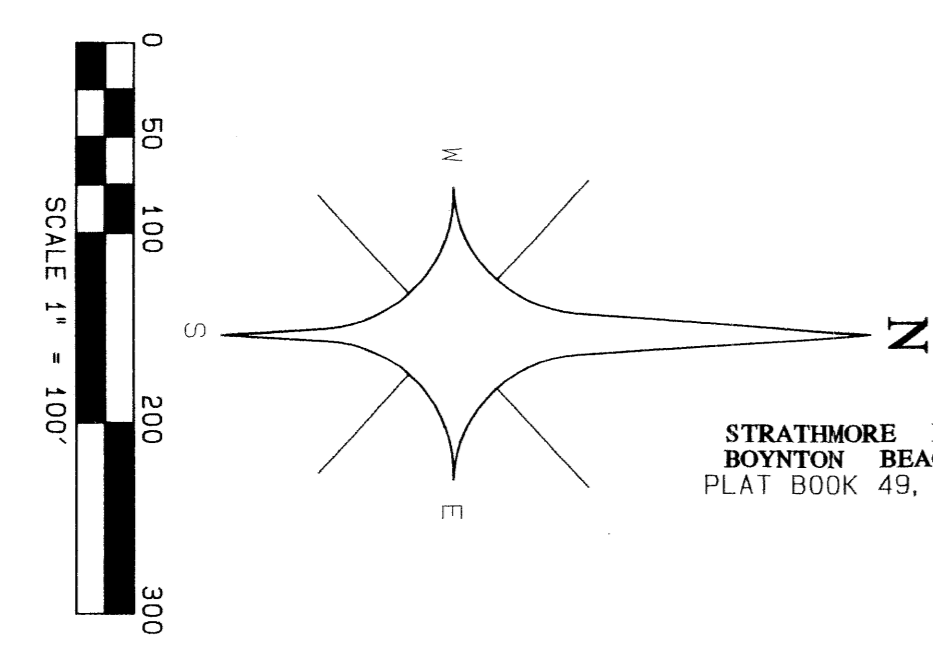


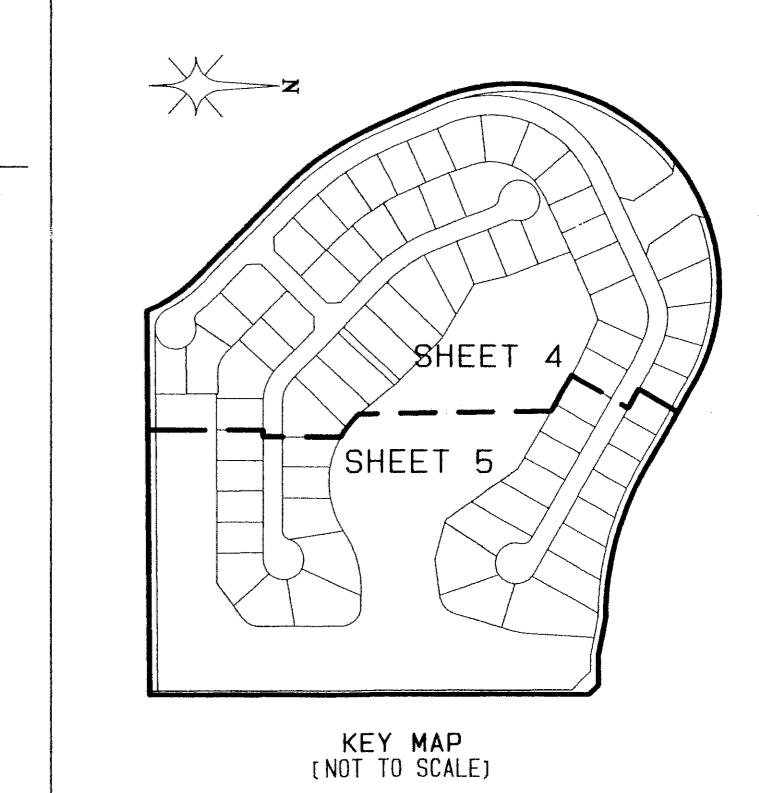
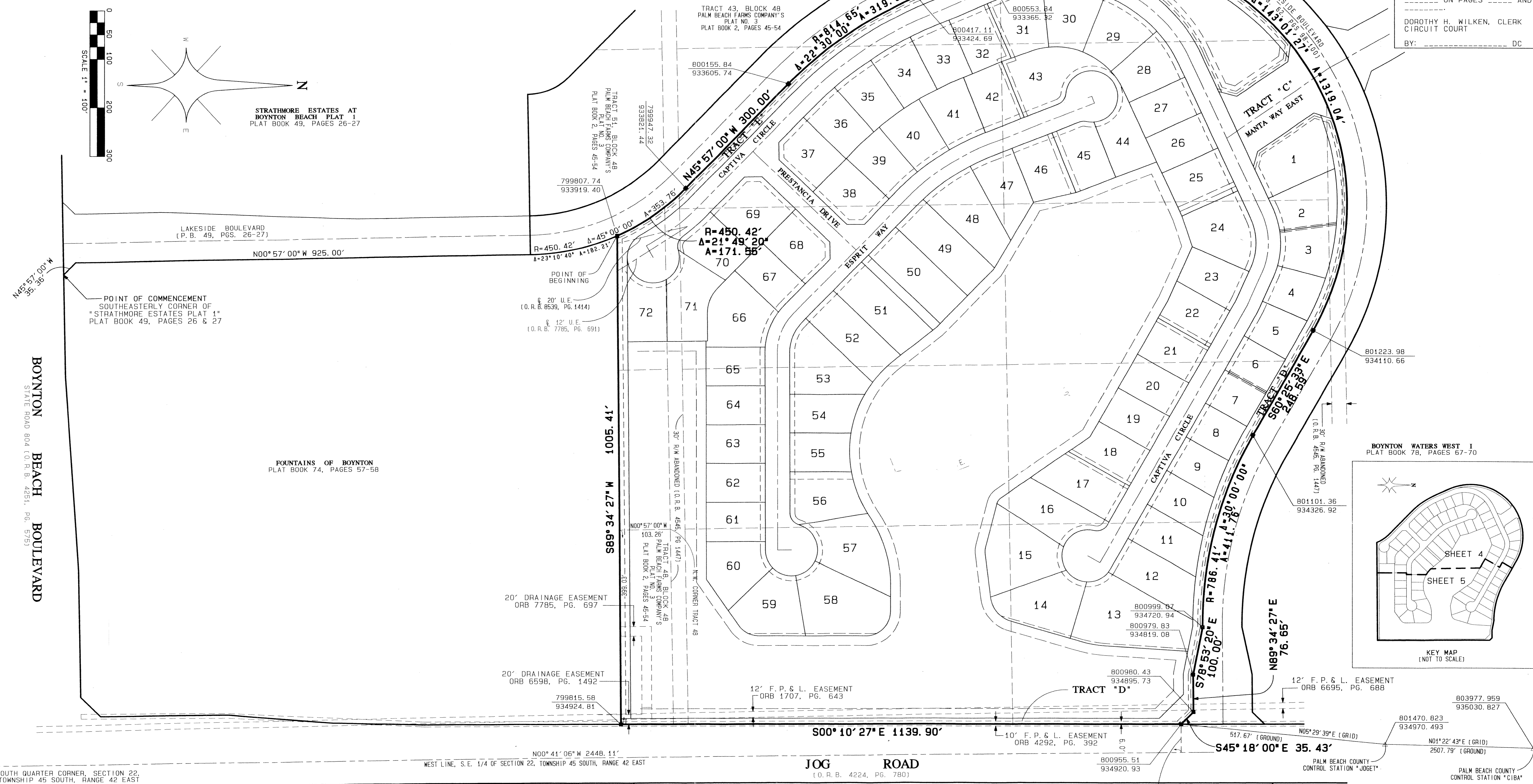
ENCLAVE AT BOYNTON WATERS

AT LAKES OF BOYNTON BEACH P.U.D., POD B
 SITUATE IN SECTION 22, TOWNSHIP 45 SOUTH, RANGE 42 EAST, PALM BEACH COUNTY,
 FLORIDA, BEING A REPLAT OF A PORTION OF BLOCK 48, "THE PALM BEACH FARMS COMPANY
 PLAT NO. 3" AS RECORDED IN PLAT BOOK 2, PAGES 45 THROUGH 54,
 OF THE PUBLIC RECORDS OF PALM BEACH COUNTY, FLORIDA
 SHEET 3 OF 5
 AUGUST, 2000



STATE OF FLORIDA }
 COUNTY OF PALM BEACH } SS
 THIS PLAT WAS FILED FOR
 RECORD AT _____ DAY OF
 THIS _____ AD. _____ AND
 DULY RECORDED IN PLAT BOOK
 _____ ON PAGES _____ AND

 DOROTHY H. WILKEN, CLERK
 CIRCUIT COURT
 BY: _____ DC



SUBDIVISION ENCLAVE AT BOYNTON WATERS
 BOOK 41 PAGE 107
 FLOOD ZONE B FLOOD MAP # 162A
 QUAD # 25 ZONING RS
 SS 245.121/B ZIP CODE 33437
 TAZ 442
 FUD NAME LAKES OF BOYNTON BEACH POD B

SOUTH QUARTER CORNER, SECTION 22,
 TOWNSHIP 45 SOUTH, RANGE 42 EAST

WEST LINE, S.E. 1/4 OF SECTION 22, TOWNSHIP 45 SOUTH, RANGE 42 EAST

JOG ROAD
 (O.R.B. 4224, PG. 780)

BOYNTON WATERS
 PLAT BOOK 69, PAGES 74-76

BRIARRIDGE PLAT TWO
 PLAT BOOK 54, PAGES 55-57

PROFESSIONAL
 SURVEYORS
 AND MAPPERS
 LB4820

ATLANTIC - CARIBBEAN MAPPING, INC.
 3070 JOG ROAD - GREENACRES, FLORIDA 33467
 (561) 964-7884; FAX (561) 964-1969